

# MARIO

MA01 / MA03 / MA05 / MA10



*By HanDe*



# Product Certificate

<b>Fire, Smoke Classification</b>	FR (US) - NFPA 701 TM#1 B2(CN) - GB50222	
<b>Health &amp; Safety</b>	Oeko-tex Standard 100 class IV RoHS Directive (EU)2015/863 AATCC112-2014	Greenguard® Gold EN71 Part 3:1994 GB18586 - 2001
<b>Colour fastness to light</b>	Grade 6 ISO105 B02:2014 ≥4.0 AATCC TM 16.3-2014; Option 3; Xenon Arc Lamp	
<b>Warranty</b>	5 Years	

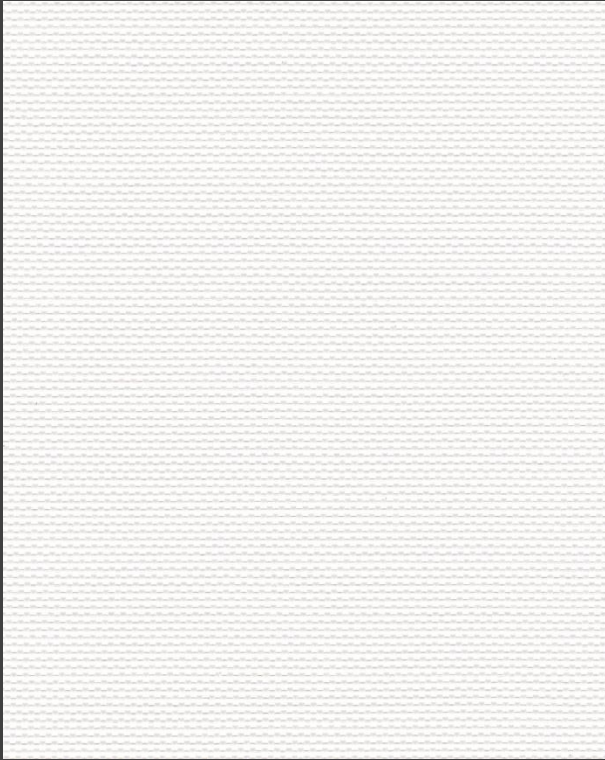


## Technical Data

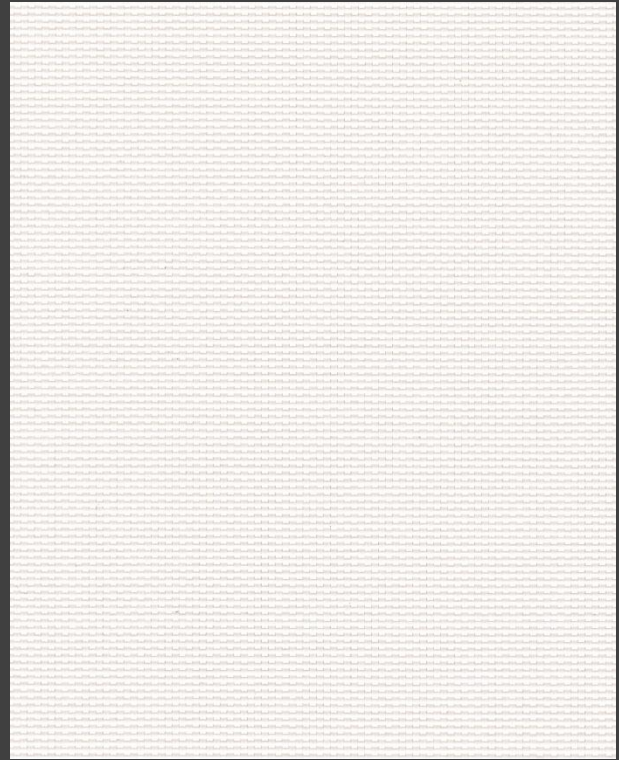
STYLE		MA01	MA03	MA05	MA10
<b>Composition</b>		24%Polyester 76% PVC	24%Polyester 76% PVC	24%Polyester 76% PVC	24%Polyester 76% PVC
<b>Openness Factor</b>		≈0.5%	≈3%	≈5%	≈10%
<b>UV Screen</b>		Up to 99%	Up to 97%	Up to 95%	Up to 90%
<b>Width</b>	inch	98"–118"	98"–118"	98"–118"	98"–118"
	cm	250–300	250–300	250–300	250–300
<b>Weight</b>	oz/yd <sup>2</sup>	15.92 ± 5%	14.30 ± 5%	13.56±5%	12.18±5%
	(ISO 2286–2) g/m <sup>2</sup>	540 ± 5%	485 ± 5%	460 ± 5%	413 ± 5%
<b>Thickness</b>	inch	0.027 ± 5%	0.022 ± 5%	0.022 ± 5%	0.022 ± 5%
	(ISO 2286–3) mm	0.69 ± 5%	0.56 ± 5%	0.56 ± 5%	0.56 ± 5%
<b>Mechanical</b>		<b>Resistance</b>			
<b>Breaking</b>	Warp	≥2000 N/5cm	≥1600 N/5cm	≥1600 N/5cm	≥1550 N/5cm
	(ISO 13934–1) Weft	≥1300 N/5cm	≥1800 N/5cm	≥1300 N/5cm	≥1350 N/5cm
<b>Tear</b>	Warp	≥120 N	≥120 N	≥120 N	≥120 N
	(ISO 4674) Weft	≥ 80 N	≥120 N	≥120 N	≥115 N
<b>Packing</b>		32.8 yards	32.8 yards	32.8 yards	32.8 yards
(Roll Length)		30 lm	30 lm	30 lm	30 lm

## Openness Factor

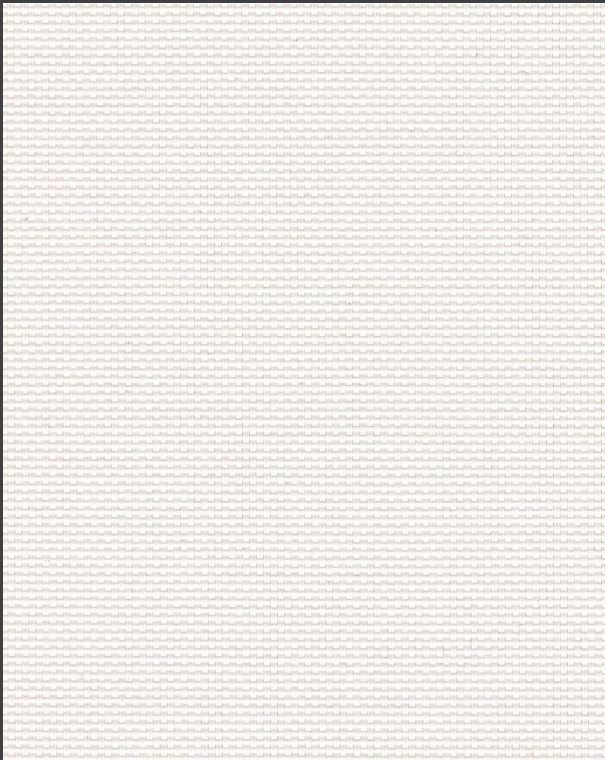
White \* White



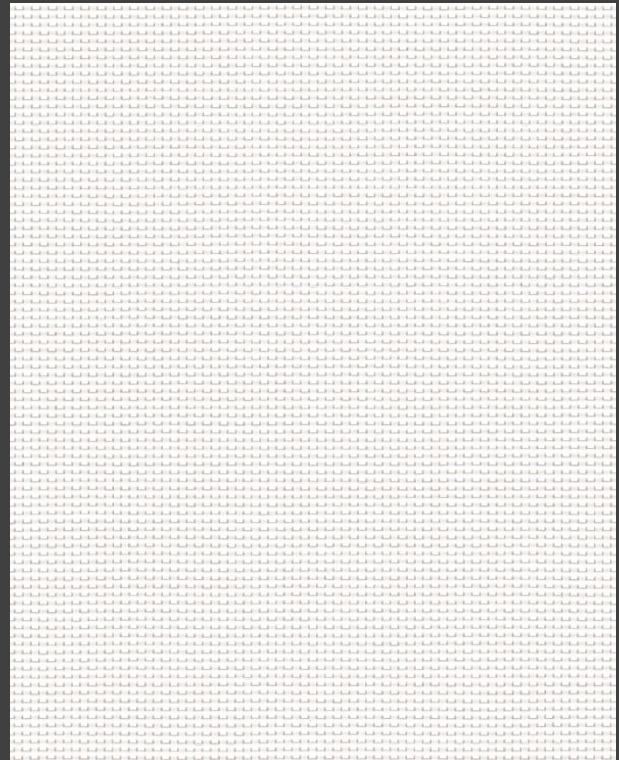
MA 1%



MA 3%



MA 5%



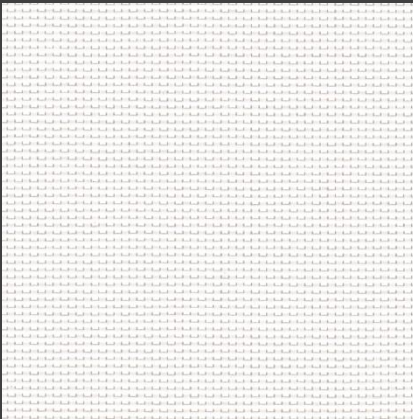
MA 10%

\* Openness Factor may be slightly different from the actual ones



## Colours

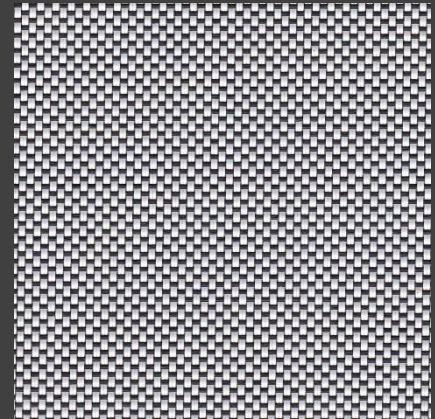
Mario 5%



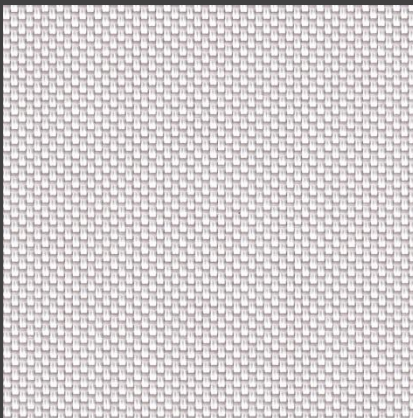
M01 White \* White



M02 White \* Sand



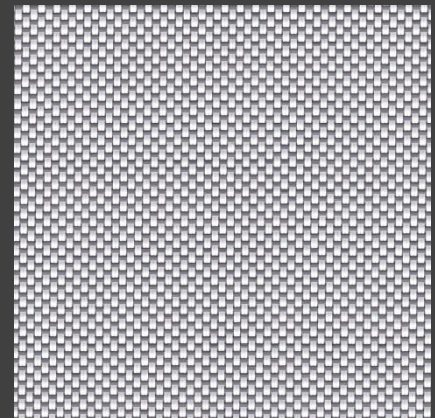
M10 White \* Black



M15 White \* Pearl



M16 White \* Linen



M17 White \* Dark Grey



**HanDe<sup>®</sup>**

**Hande Manufacturing(China)Co.,Ltd**

Add: No.161, Yao TianHe Street,Yong shun Avenue,Yonghe Economic Zone,  
GZ Economic&Technological Development District, Guang zhou, China

Tel: 86-20-3222888 Fax: 86-20-3222205 PostCode: 511356

Mail: info@handegroup.com.cn



[www.handegroup.com.cn](http://www.handegroup.com.cn)