

Mario Light

ML01 / ML03 / ML05



SUNESSE[®]
Sunscreen Finesse

By HanDe

Product Certificate

Fire, Smoke Classification	FR (US) - NFPA 701 TM#1 B2(CN) - GB17591	
Health & Safety	Oeko-tex Standard 100 class IV RoHS - lead Free AATCC 12-2014	Greenguard® Gold EN71 Part 3:1994 GB18586 - 2001
Colour fastness to light	Grade 8 ISO105 B02:2014 ≥4.0 AATCC TM 16.3-2014; Option 3; Xenon Arc Lamp	
Warranty	5 Years	



Technical Data

STYLE		ML01	ML03	ML05
Composition		25%Polyester 75% PVC	25%Polyester 75% PVC	25%Polyester 75% PVC
Openness Factor		≈1%	≈3%	≈5%
UV Screen		Up to 99%	Up to 97%	Up to 95%
Width	inch	98"-118"	98"-118"	98"-118"
	cm	250-300	250-300	250-300
Weight	oz/yd ²	12.83 ± 5%	11.50 ± 5%	10.62 ± 5%
(ISO 2286-2)	g/m ²	435 ± 5%	390 ± 5%	360 ± 5%
Thickness	inch	0.021 ± 5%	0.020 ± 5%	0.020 ± 5%
(ISO 2286-3)	mm	0.54 ± 5%	0.52 ± 5%	0.50 ± 5%
Breaking	Warp	≥1880 N/5cm	≥1970 N/5cm	≥1780 N/5cm
(ISO 13934-1)	Weft	≥1390 N/5cm	≥1070 N/5cm	≥1050 N/5cm
Tear	Warp	≥110 N	≥110 N	≥115 N
(ISO 4674)	Weft	≥ 70 N	≥ 70 N	≥ 70 N
Packing		32.8 yards	32.8 yards	32.8 yards
(Roll Length)		30 lm	30 lm	30 lm

Thermal and Optical Factors

Color	Fabric Properties					Fabric & Glass	
	Thermal			Optical		SHGC % Improvement	SHGC
	Ts	Rs	As	Rv	Tv		
Mario Light 1%							
M03 White*Grey	5	57	38	82	5	54%	0.21
M16 White*Linen	8	59	33	73	6	54%	0.21
M18 Black*Black	3	4	93	62	3	33%	0.37
M36 Pure White	20	64	16	59	17	52%	0.25
Mario Light 3%							
M03 White*Grey	9	60	31	52	8	53%	0.22
M16 White*Linen	11	61	28	53	8	53%	0.22
M18 Black*Black	5	4	91	4	4	33%	0.37
M36 Pure White	21	62	17	57	18	51%	0.26
Mario Light 5%							
M03 White*Grey	13	55	32	50	10	51%	0.24
M16 White*Linen	15	57	28	50	12	50%	0.25
M36 Pure White	24	57	19	53	21	48%	0.29

Ts (Solar transmittance): Proportion of solar energy transmitted through the fabric.

Rs (Solar reflectance): Proportion of solar radiation reflected by the fabric.

As (Solar absorptance): Proportion of solar radiation absorbed by the fabric.

Tv (Visible light transmittance): Total percentage of light radiation through the fabric over a wavelength of 380 to 780 nm.

Rv (visible light reflectance): Total percentage of light radiation reflected by the fabric over a wavelength of 380 to 780 nm.

SHGC (Total solar factor): Solar energy which actually penetrates into a room through the blind and glazing. A low value means good thermal performance.

Openness Factor

White * White

1%

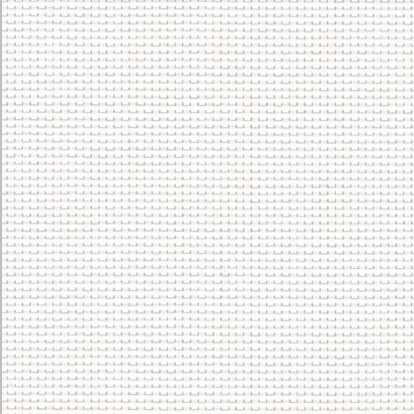
3%

5%

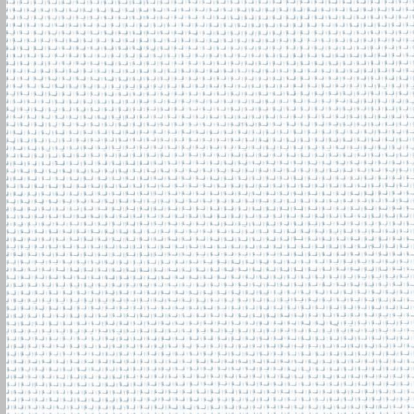
* Openness Factor may be slightly different from the actual

Colours

Mario Light 3%



M01 White * White



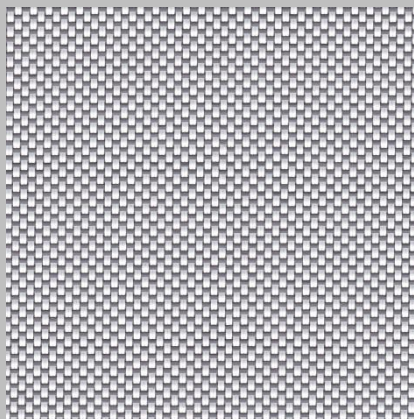
M36 Pure White



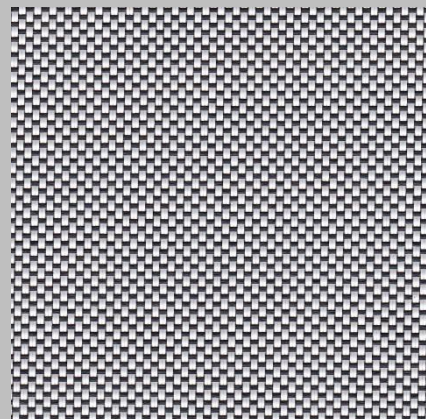
M16 White * Linen



M03 White * Grey



M17 White * Dark Grey



M10 White * Black



M19 Black * Preal



M52 Black * Dark Grey



M18 Black * Black

* Colours May be slightly different from the actual ones



HanDe[®]

Guangzhou Hande New Materials Co.,Ltd

Add: No.161, Yao TianHe Street,Yong shun Avenue,Yonghe Economic Zone,
GZ Economic&Technological Development District, Guang zhou, China

Tel: 86-20-32226319 Fax: 86-20-32222205 PostCode: 511356

MLil: info@handegroup.com.cn

www.handegroup.com.cm