

 Blockout Screen

Nano-Polymerize Supersoft Blockout

Prairie & Lintex & Mirabell & Monaco & Pantanal



SUNESSE®
Sunscreen Finesse

By HanDe

Product Certificate

Fire, Smoke Classification	Non-FR	【FR (US) - NFPA 701 TM#1 by Requirement】
Health & Safety	Greenguard® Gold EN71 Part 3:1994 GB18586 - 2001	RoHS Directive (EU)2015/863 AATCC112-2014
Colour fastness to light	Grade 6 ISO105 B02:2014 ≥4.0 AATCC TM 16.3-2014; Option 3; Xenon Arc Lamp	
Warranty	5 年	



Technical Data

STYLE		Prairie	Lintex	Mirabell	Monaco	Pantanal
Composition		100% Polyester coated with Acrylic				
Openness Factor		0%	0%	0%	0%	0%
UV Screen		100%	100%	100%	100%	100%
Width	inch	118"	118"	118"	118"	110"
	cm	300	300	300	300	280
Weight	oz/yd ²	10.02±5%	11.50±5%	12.92±5%	13.57±5%	11.06±5%
	(ISO 2286-2) g/m ²	340 ± 5%	390 ± 5%	438 ± 5%	460 ± 5%	375 ± 5%
Thickness	inch	0.026 ± 5%	0.022 ± 5%	0.028 ± 5%	0.027 ± 5%	0.024 ± 5%
	(ISO 2286-3) mm	0.66 ± 5%	0.56 ± 5%	0.72 ± 5%	0.69 ± 5%	0.62 ± 5%
MECHANICAL RESISTANCE						
Breaking	Warp	≥2350 N/5cm	≥1360 N/5cm	≥1330 N/5cm	≥2020 N/5cm	≥1260 N/5cm
	(ISO 13934-1) Weft	≥1320 N/5cm	≥1510 N/5cm	≥2670 N/5cm	≥2250 N/5cm	≥ 940 N/5cm
Tear	Warp	≥ 500 N	≥ 225 N	≥ 200 N	≥ 580 N	≥ 90 N
	(ISO 4674) Weft	≥ 310 N	≥ 320 N	≥ 490 N	≥ 600 N	≥ 80 N
Packing	Yards	27.4	27.4	27.4	27.4	27.4
	(Roll Length) Im	25	25	25	25	25

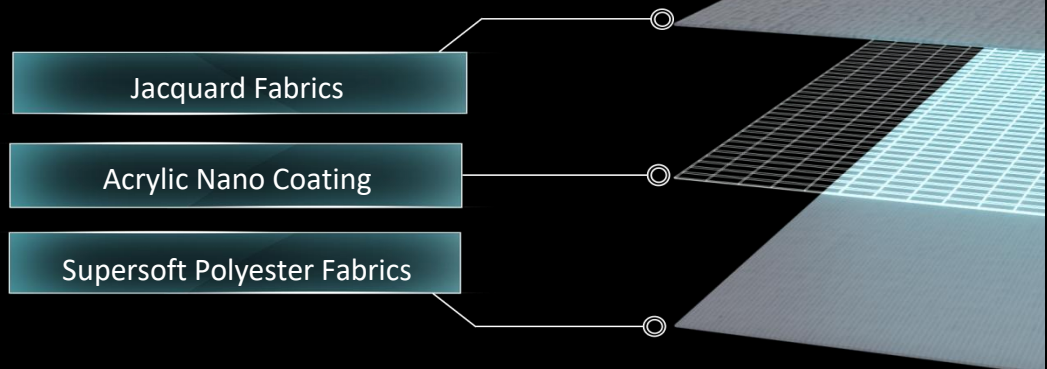
Nano-Polymerize Supersoft Blockout Fabric

INNOVATIVE COATED FABRIC WITH NEW TECHNOLOGY

- Supersoft hand felling
- Non-sticky, Peel-free and Scratch-proof
- weldable
- 5 series and 21 colors
- Applied to interior, especially for residential and hotel
- Application for roller and roman, etc.

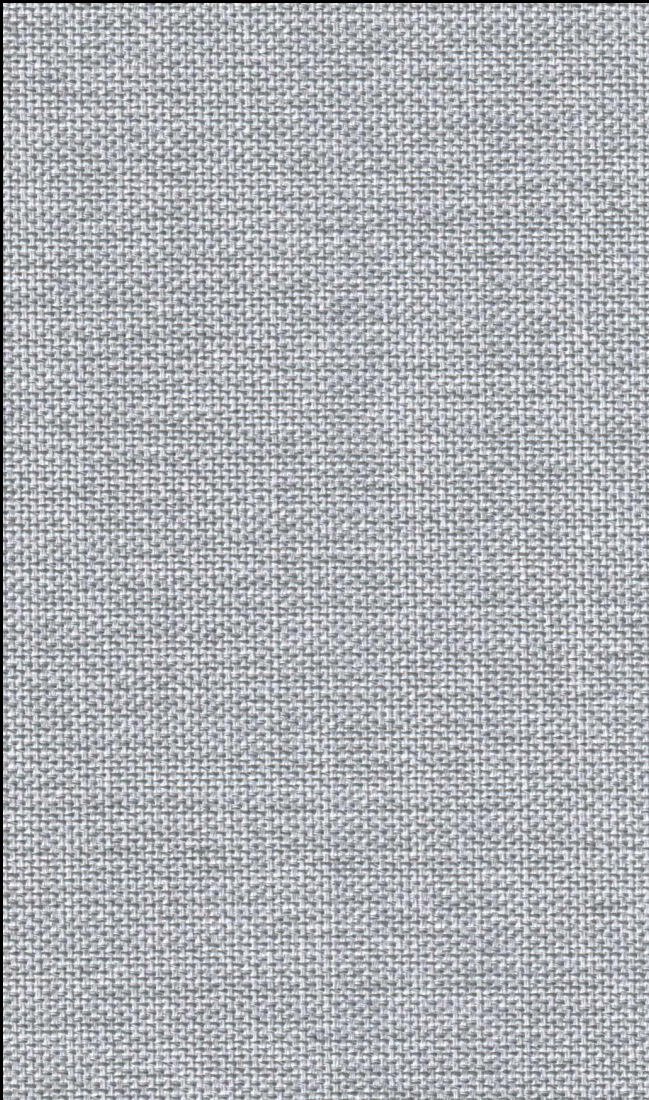


Product Mix

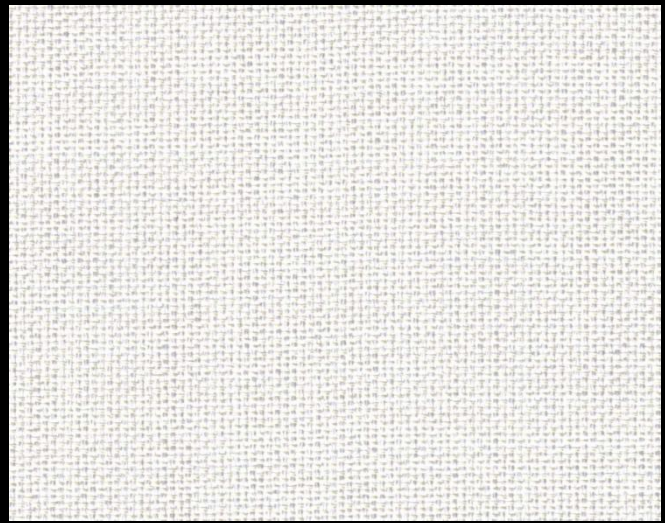


Colours

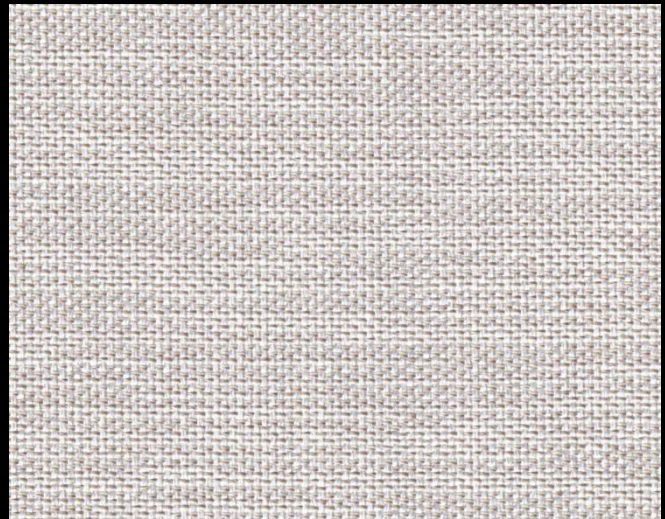
Prairie



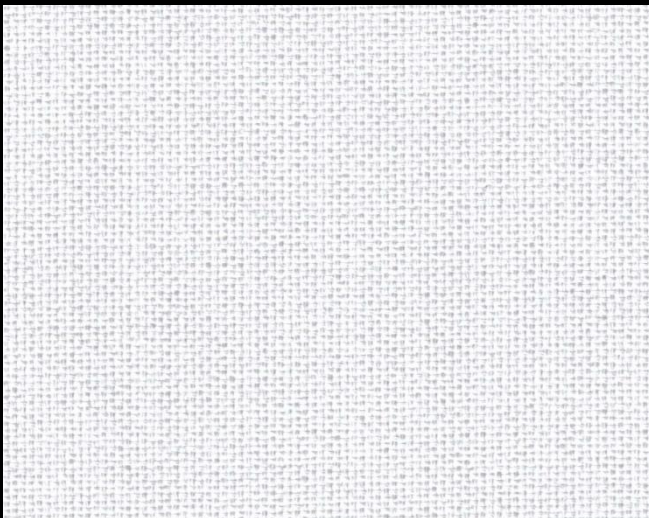
S2261-4 Smoke



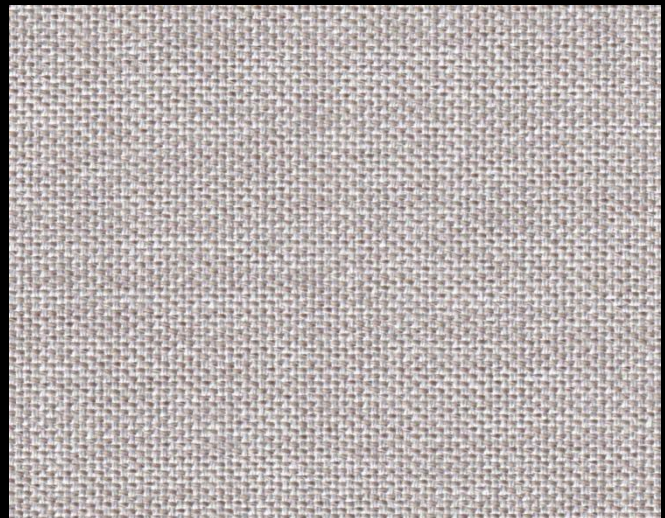
S2261-1 Ivoey



S2261-2 Shell



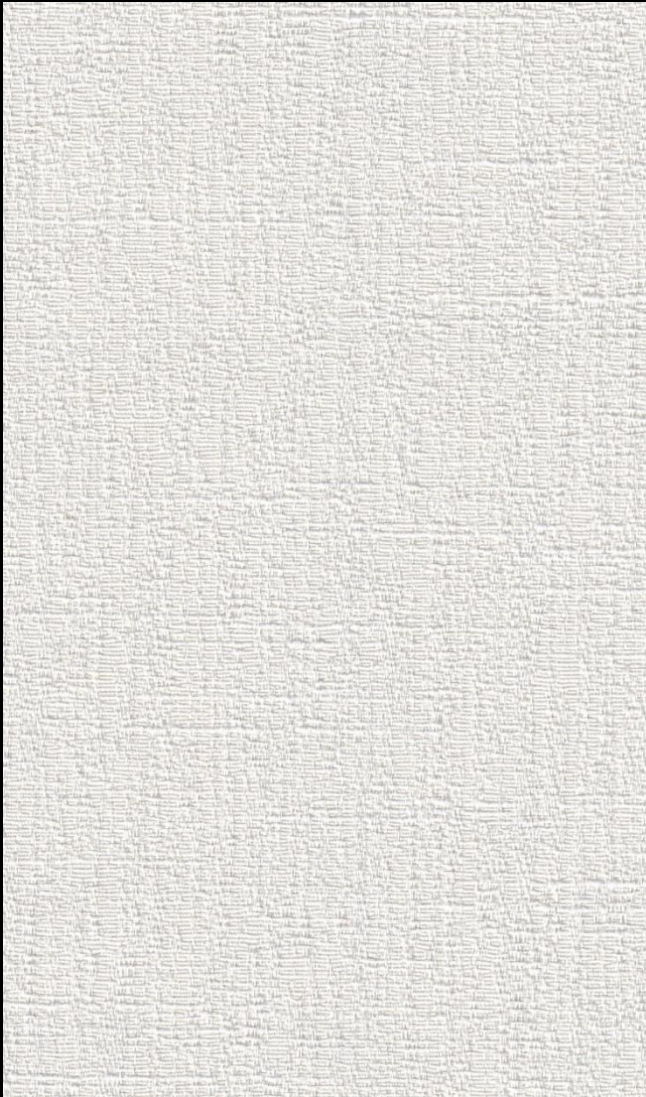
S2261-5 White



S2261-6 Stone

Colours

Lintex



S2262-2 Oyster



S2262-4 Chrome



S2262-5 Sail

Colours

Mirabell



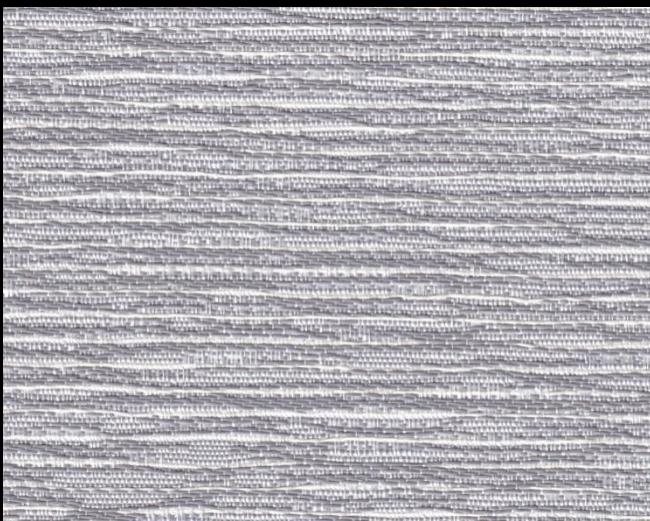
S2265-3 Parchment



S2265-1 Cotton



S2265-2 Linen



S2265-5 Mica



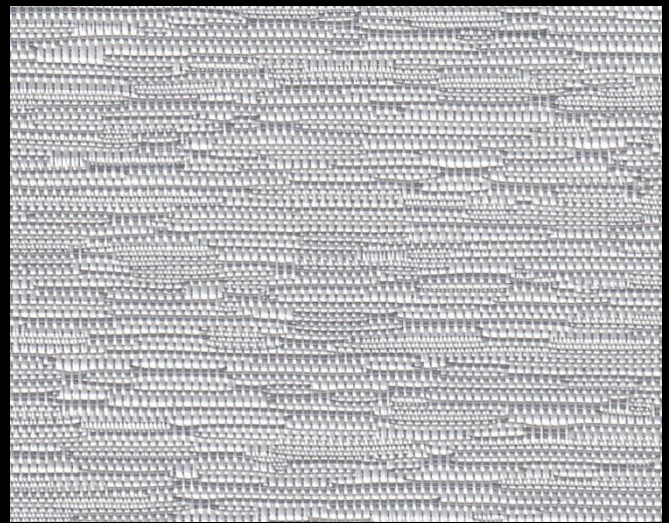
S2265-4 Pebble

Colours

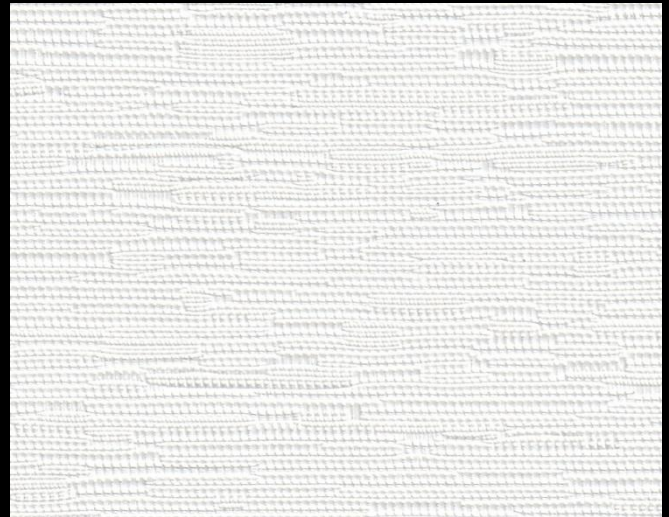
Monaco



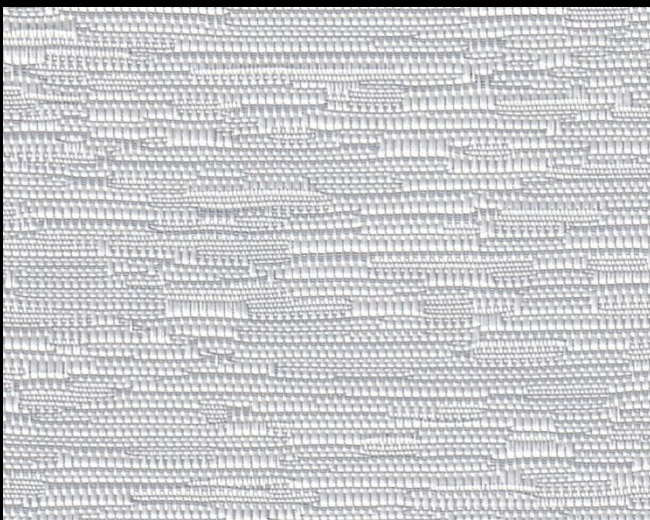
S2266-1 Chalk



S2266-2 Graphite



S2266-3 Cream



S2266-4 Concrete



S2266-5 Pearl

Colours

Pantanal



S2267-1 Linen



S2267-2 Sand



S2267-3 Mocha



HanDe[®]

Guangzhou Hande New Materials Co.,Ltd

Add: No.161, Yao TianHe Street, Yong shun Avenue, Yonghe Economic Zone,
GZ Economic&Technological Development District, Guang zhou, China

Tel: 86-20-32226319 Fax: 86-20-32222205 PostCode: 511356

Mail: info@handegroup.com.cn

www.handegroup.com.cn