

Nova Twill

NT1 / NT3



By HanDe

Product Certificate

Fire, Smoke Classification	FR (US) - NFPA 701 TM#1 B1(CN) - GB50222	BS (GB) - 5867 Part2 TypeB
Health & Safety	Oeko-tex Standard 100 class IV RoHS Directive (EU)2015/863 AATCC112-2014	Greenguard® Gold EN71 Part 3:1994 GB18586 - 2001
Bacterial & Fungal Resistance	ASTM G21-09 ASTM E 2180-07 Reduce more than 99.9% of bacteria	
Colour fastness to light	Grade 8 ISO105 B02:2014 ≥4.0 AATCC TM 16.3-2014; Option 3; Xenon Arc Lamp	
Warranty	5 Years	



Technical Data

STYLE		NT1	NT3
Composition		25%Polyester 75% PVC	25%Polyester 75% PVC
Openness Factor		≈1%	≈3%
UV Screen		Up to 99%	Up to 97%
Width	inch	98"–118"	98"–118"
	cm	250–300	250–300
Weight	oz/yd ²	13.23±5%	12.64 ± 5%
	(ISO 2286–2) g/m ²	450 ± 5%	430 ± 5%
Thickness	inch	0.026 ± 5%	0.025 ± 5%
	(ISO 2286–3) mm	0.65 ± 5%	0.63 ± 5%
Mechanical		Resistance	
Breaking	Warp	≥2100 N/5cm	≥1700 N/5cm
	(ISO 13934–1) Weft	≥1050 N/5cm	≥1100 N/5cm
Tear	Warp	≥165 N	≥155 N
	(ISO 4674) Weft	≥125 N	≥130 N
Packing		32.8 yards	32.8 yards
(Roll Length)		30 lm	30 lm

Thermal and Optical Factors

Color	Side	Fabric Properties					Fabric & Glass	
		Thermal			Optical		SHGC % Improvement	SHGC
		Ts	Rs	As	Rv	Tv		

Recommended Comfort Classification				
Thermal Control	Visual			
	Daylight Utilization	Glare Control	Night Privacy	Outward Visibility

Nova Twill 1%

0101 White*White	A	17	66	17	73	14	55%	0.22
0102 White*Linen	A	17	66	17	73	14	55%	0.22
	B	15	63	22	68	11	52%	0.22
0103 White*Pearl	A	15	57	28	60	11	46%	0.24
	B	14	60	26	66	11	51%	0.22
0104 White*Black	A	7	47	46	47	6	42%	0.27
	B	9	22	69	32	8	30%	0.29
0105 White*Grey	A	11	54	35	60	7	47%	0.23
	B	11	36	53	38	7	33%	0.29
0107 White*Sand	A	14	60	26	65	10	50%	0.22
	B	14	49	37	50	10	40%	0.26
0403 Black*Pearl	A	0	6	94	6	0	15%	0.35
	B	0	16	84	18	0	21%	0.32
0404 Black*Black	A	0	3	97	3	0	13%	0.36
0406 Black*Brown	A	0	4	96	4	0	14%	0.36
	B	0	6	94	6	0	15%	0.35

2	2	1	2	0
2	2	1	2	1
2	2	1	2	1
2	1	3	2	2
2	1	2	2	1
2	1	2	2	1
1	1	3	3	1
1	1	3	3	1
1	1	3	3	1

Nova Twill 3%

0101 White*White	A	19	64	17	71	16	53%	0.23
0102 White*Linen	A	19	63	18	67	13	53%	0.23
	B	17	62	21	59	13	45%	0.25
0103 White*Pearl	A	17	56	27	64	12	49%	0.24
	B	15	58	27	53	12	41%	0.27
0104 White*Black	A	8	43	49	34	7	39%	0.27
	B	9	20	71	8	8	27%	0.29
0105 White*Grey	A	15	48	37	57	7	45%	0.24
	B	11	52	37	36	7	31%	0.30
0107 White*Sand	A	11	34	55	62	11	48%	0.24
	B	15	58	27	48	11	38%	0.28
0403 Black*Pearl	A	15	47	38	7	2	15%	0.36
	B	2	6	92	20	2	22%	0.32
0404 Black*Black	A	2	17	81	3	2	13%	0.37
0406 Black*Brown	A	2	4	94	4	2	14%	0.36
	B	2	7	91	7	2	15%	0.36

2	2	1	2	0
2	2	1	2	1
2	2	1	2	1
2	1	2	2	2
2	1	1	2	1
2	2	1	2	1
1	1	2	2	1
1	1	2	2	1
1	1	2	2	1

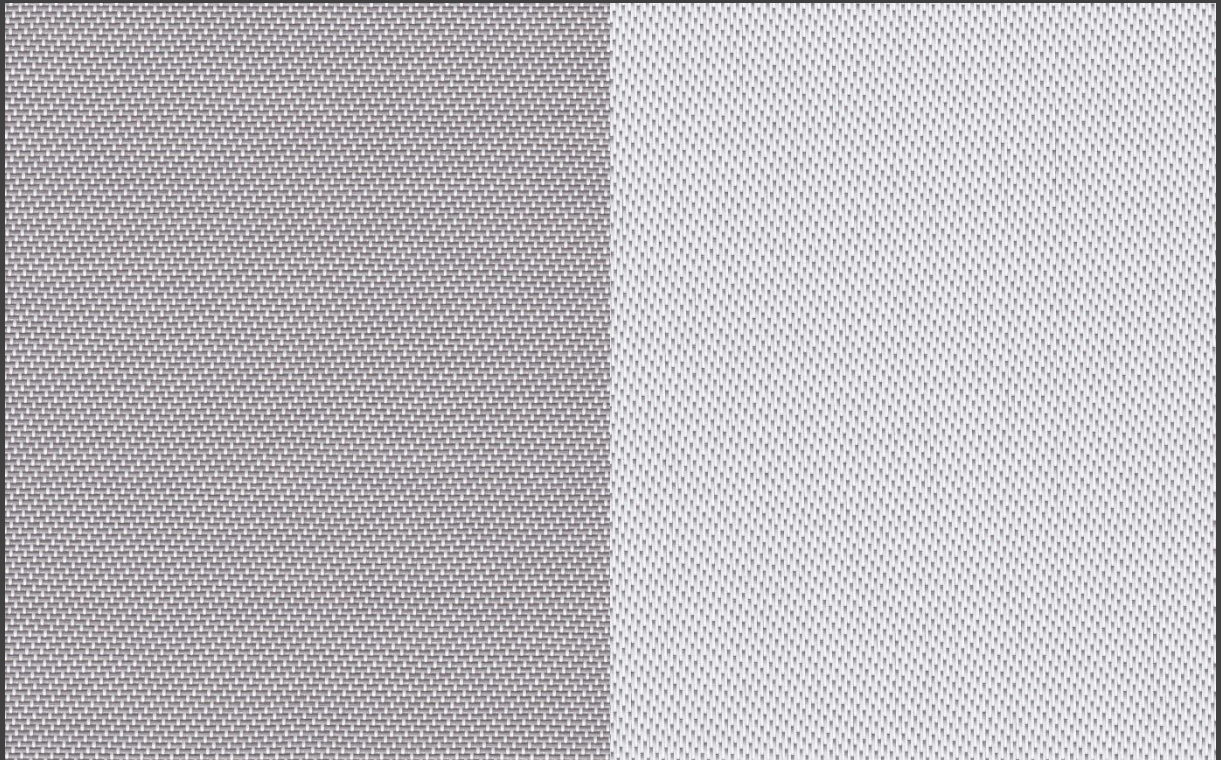
Ts (Solar transmittance): Proportion of solar energy transmitted through the fabric. Rs (Solar reflectance): Proportion of solar radiation reflected by the fabric. As (Solar absorptance): Proportion of solar radiation absorbed by the fabric. Tv (Visible light transmittance): Total percentage of light radiation through the fabric over a wavelength of 380 to 780 nm. Rv (visible light reflectance): Total percentage of light radiation reflected by the fabric over a wavelength of 380 to 780 nm. SHGC (Total solar factor): Solar energy which actually penetrates into a room through the blind and glazing. A low value means good thermal performance.

Comfort Classification According to EN14501 : 0. Very little effect 1. Little effect 2. Moderate effect 3. Good effect 4. Very good effect

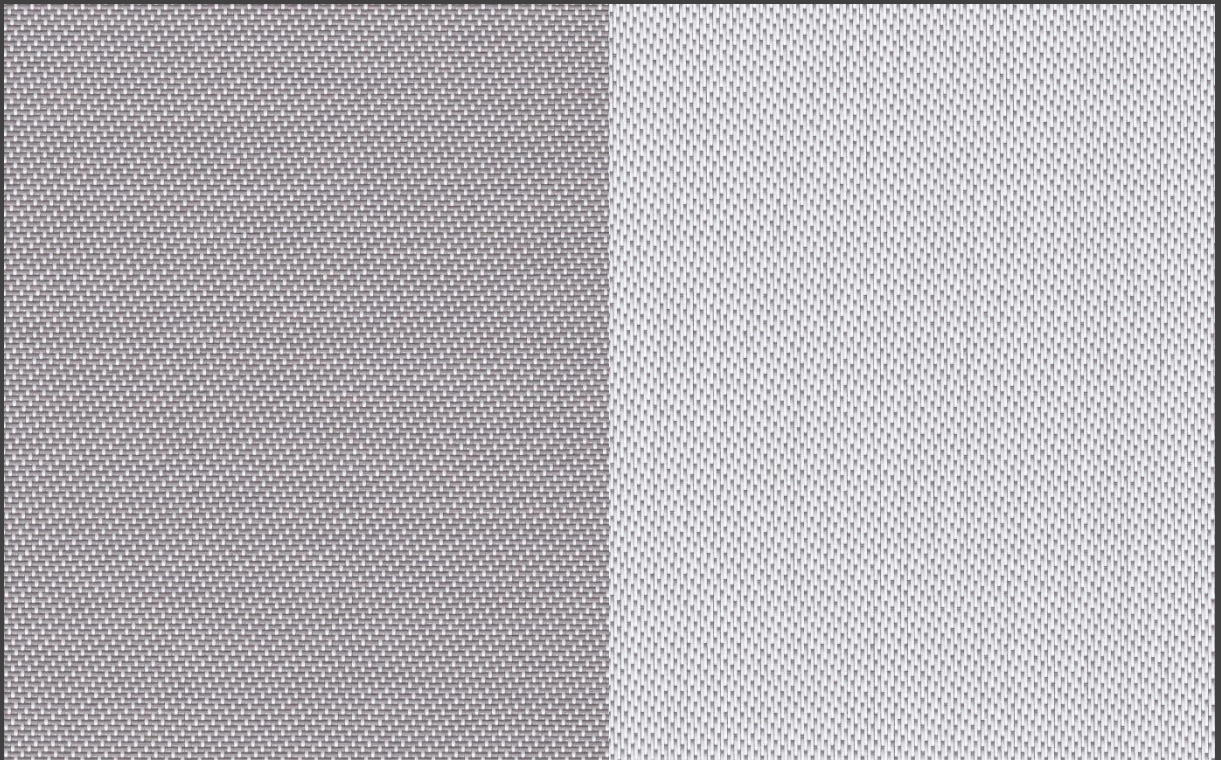
Openness Factor

0105 White * Grey

NT 1%

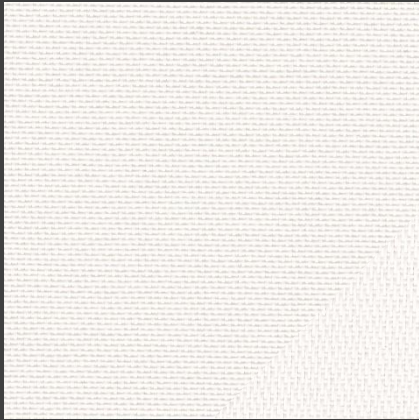


NT 3%



Colours

NT 3%



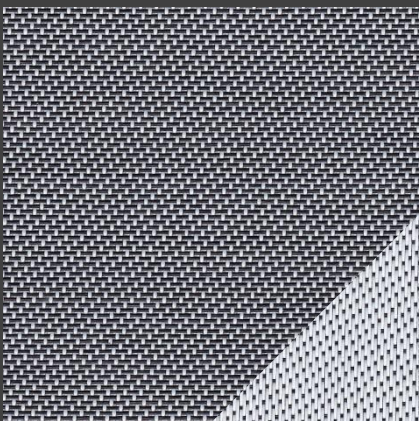
0101 White * White



0102 White * Linen



0103 White * Pearl



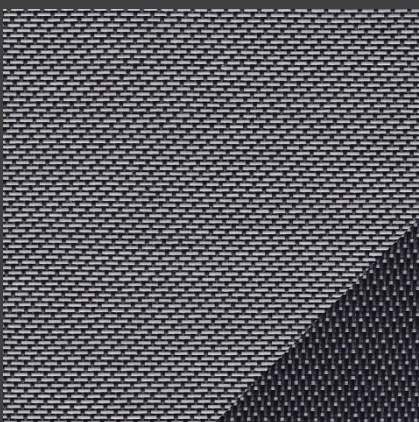
0104 White * Black



0105 White * Grey



0107 White * Sand



0403 Black * Pearl



0404 Black * Black



0406 Black * Brown



HanDe[®]

Hande Manufacturing(China)Co.,Ltd

Add: No.161, Yao TianHe Street,Yong shun Avenue,Yonghe Economic Zone,
GZ Economic&Technological Development District, Guang zhou, China

Tel: 86-20-3222888 Fax: 86-20-3222205 PostCode: 511356

Mail: info@handegroup.com.cn



www.handegroup.com.cn