

**Serge**

---

Serge



---

*By HanDe*

## Product Certificate

<b>Fire, Smoke Classification</b>	FR (US) - NFPA 701 TM#1 B1(CN) - GB50222	BS (GB) - 5867 Part2 TypeB
<b>Health &amp; Safety</b>	Oeko-tex Standard 100 class IV RoHS Directive (EU)2015/863 AATCC112-2014	Greenguard® Gold EN71 Part 3:1994 GB18586 - 2001
<b>Bacterial &amp; Fungal Resistance</b>	ASTM G21-09 ASTM E 2180-07 Reduce more than 99.9% of bacteria	
<b>Colour fastness to light</b>	Grade 8 ISO105 B02:2014 ≥4.0 AATCC TM 16.3-2014; Option 3; Xenon Arc Lamp	
<b>Warranty</b>	5 Years	



## Technical Data

STYLE		Serge
<b>Composition</b>		26%Polyester 74% PVC
<b>Openness Factor</b>		≈5%
<b>UV Screen</b>		Up to 95%
<b>Width</b>	inch	98"–118"
	cm	250–300
<b>Weight</b>	oz/yd <sup>2</sup>	17.35±5%
(ISO 2286–2)	g/m <sup>2</sup>	590 ± 5%
<b>Thickness</b>	inch	0.034 ± 5%
(ISO 2286–3)	mm	0.86 ± 5%
<b>Mechanical</b>	<b>Resistance</b>	
<b>Breaking</b>	Warp	≥2250 N/5cm
(ISO 13934–1)	Weft	≥1470 N/5cm
<b>Tear</b>	Warp	≥290 N
(ISO 4674)	Weft	≥235 N
<b>Packing</b>		32.8 yards
(Roll Length)		30 Im

## Thermal and Optical Factors

Color	Side	Fabric Properties					Fabric & Glass	
		Thermal			Optical		SHGC % Improvement	SHGC
		Ts	Rs	As	Rv	Tv		

Recommended Comfort Classification				
Thermal Control	Visual			
	Daylight Utilization	Glare Control	Night Privacy	Outward Visibility

### Serge 3%

0101 White*White	A	20	68	12	73	14	55%	0.20
0102 White*Linen	A	12	62	26	67	9	51%	0.21
	B	12	58	30	60	9	47%	0.23
0103 White*Pearl	A	10	56	34	62	8	48%	0.22
	B	10	49	41	53	8	42%	0.25
0105 White*Grey	A	7	47	46	51	5	41%	0.24
	B	7	35	58	37	5	32%	0.28
0107 White* Sand	A	10	56	34	58	7	46%	0.23
	B	10	48	42	48	7	39%	0.26

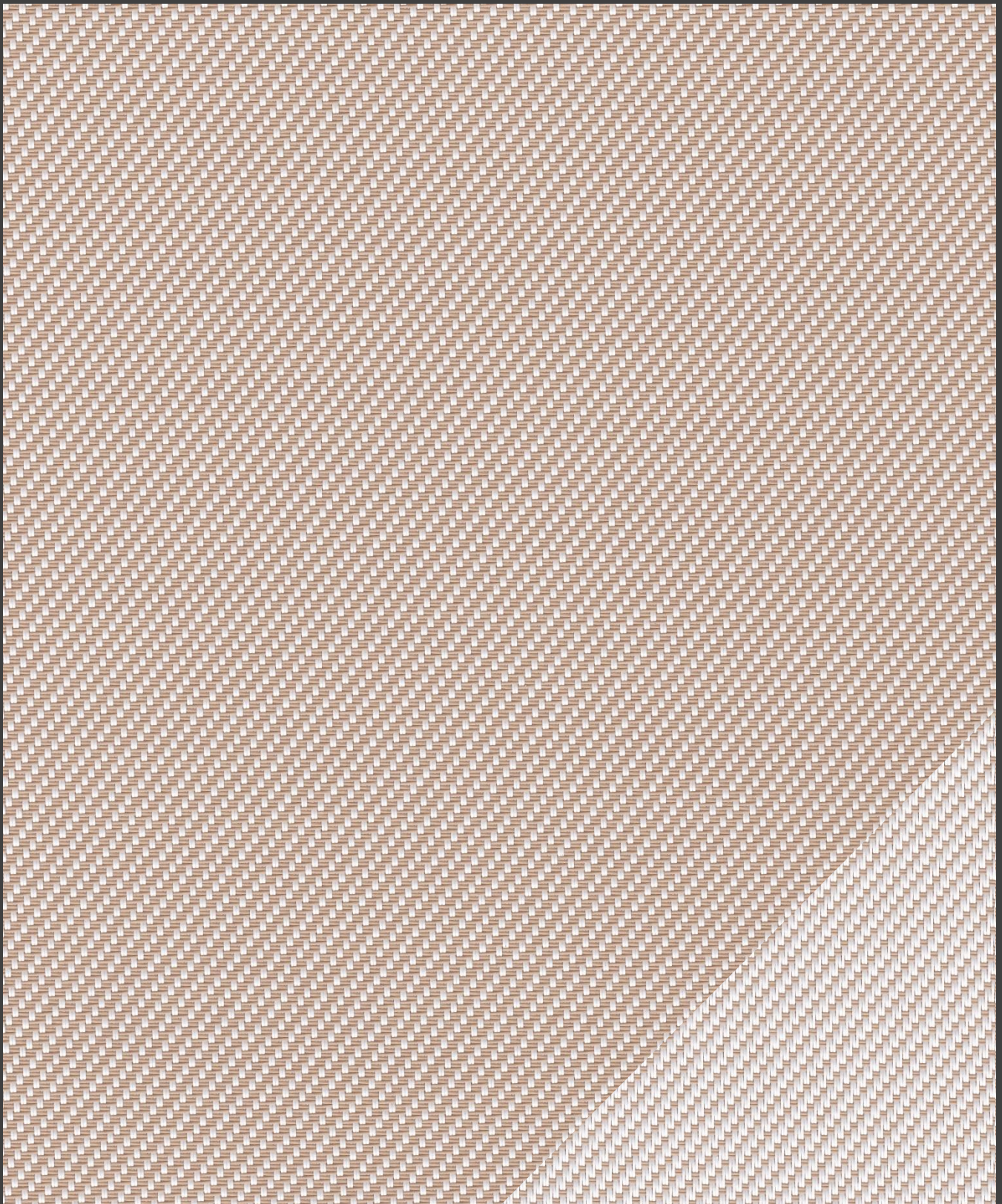
1	2	0	1	1
1	2	0	1	1
1	2	1	2	2
1	1	1	2	2
1	2	1	2	2

Ts (Solar transmittance): Proportion of solar energy transmitted through the fabric. Rs (Solar reflectance): Proportion of solar radiation reflected by the fabric. As (Solar absorptance): Proportion of solar radiation absorbed by the fabric. Tv (Visible light transmittance): Total percentage of light radiation through the fabric over a wavelength of 380 to 780 nm. Rv (visible light reflectance): Total percentage of light radiation reflected by the fabric over a wavelength of 380 to 780 nm. SHGC (Total solar factor): Solar energy which actually penetrates into a room through the blind and glazing. A low value means good thermal performance.

Comfort Classification According to EN14501 : 0. Very little effect    1. Little effect    2. Moderate effect    3. Good effect    4. Very good effect

## Openness Factor

0107 White \* Sand

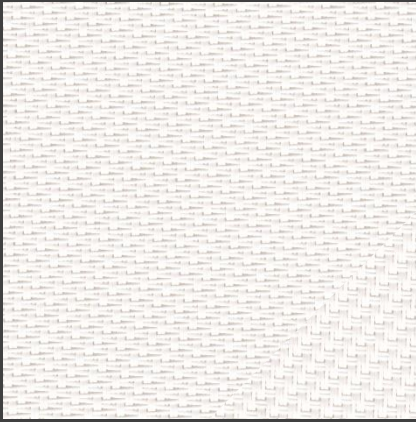


Serge 3%

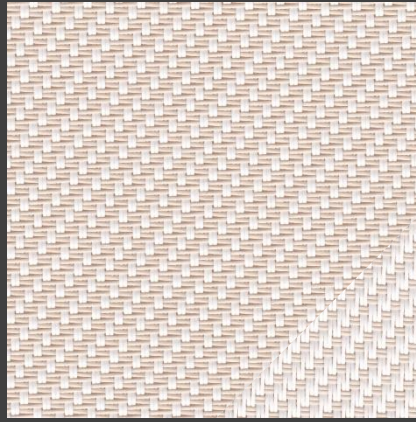
Openness Factor may be slightly different from the actual ones

## Colours

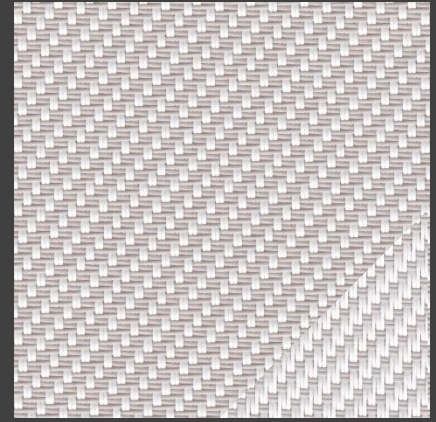
Serge 3%



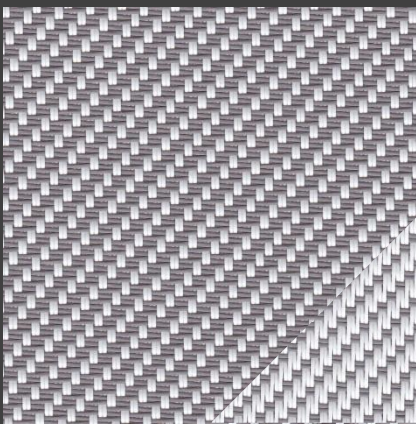
0101 White \* White



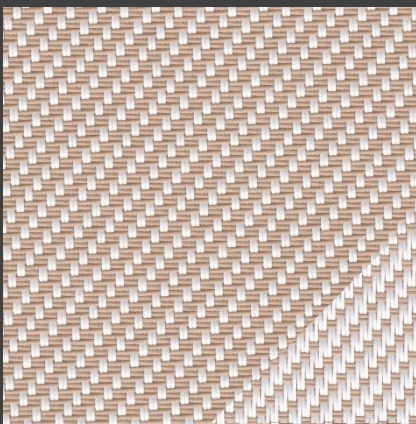
0102 White \* Linen



0103 White \* Pearl



0105 White \* Grey



0107 White \* Sand



**HanDe<sup>®</sup>**

**Hande Manufacturing(China)Co.,Ltd**

Add: No.161, Yao TianHe Street,Yong shun Avenue,Yonghe Economic Zone,  
GZ Economic&Technological Development District, Guang zhou, China

Tel: 86-20-3222888 Fax: 86-20-3222205 PostCode: 511356

Mail: info@handegroup.com.cn



[www.handegroup.com.cn](http://www.handegroup.com.cn)