

 Blockout Screen

# Solar Blockout

---



*By HanDe*

# Product Certificate

<b>Fire, Smoke Classification</b>	FR (US) - NFPA 701 TM#1	BS (GB) - 5867 Part2 TypeB
	B1 (CN) - GB17591	B1 (DE) – DIN4102
<b>Health &amp; Safety</b>	Oeko-tex Standard 100 class IV	Greenguard® Gold
	RoHS Directive (EU)2015/863	EN71 Part 3:1994
	AATCC112-2014	GB18586 - 2001
<b>Colour fastness to light</b>	≥Grade 8 ISO105 B02:2014	
	≥4.0 AATCC TM 16.3-2014; Option 3; Xenon Arc Lamp	
<b>Warranty</b>	5 Years	



## Technical Data

STYLE		NightFall			
<b>Composition</b>		25% Polyester – 75% PVC		<b>Mechanical Resistance</b>	
<b>Openness Factor</b>		0%		<b>Breaking</b>	Warp ≥2700 N/5cm
<b>UV Screen</b>		100%		(ISO 13934-1)	Weft ≥ 990 N/5cm
<b>Width</b>	Inch	98" – 118"		<b>Tear</b>	Warp ≥110 N
	cm	250 – 300		(ISO 4674)	Weft ≥ 40 N
<b>Weight</b>	oz/yd <sup>2</sup>	16.95±5%		<b>Packing</b>	32.8 yards
	(ISO 2286-2) g/m <sup>2</sup>	575 ± 5%		(Roll Length)	30 Im
<b>Thickness</b>	Inch	0.027 ± 5%			
	(ISO 2286-3) mm	0.69 ± 5%			

## Care & Cleaning

- ✧ Remove dust with vacuum cleaner or compressed air.
- ✧ Handle the fabric with care (clean and dry hands, or use of gloves).
- ✧ Do not scrub, use a plant-based eraser to remove superficial stains.
- ✧ Do not use solvents or any abrasive substance that might damage the face of fabric.
- ✧ All types of chemicals will cause permanent damage to the fabric. Therefore, if cleaning windows etc., the blind will have to be raised to avoid any direct or indirect spray or splatter of chemicals on the fabric.

## Thermal and Optical Factors

Color	Fabric Properties					Fabric & Glass	
	Thermal			Optical		SHGC % Improvement	SHGC
	Ts	Rs	As	Rv	Tv		

Recommended Comfort Classification				
Thermal Control	Visual			
	Daylight Utilization	Glare Control	Night Privacy	Outward Visibility

### Solar Blockout

0101 White							
0105 White*Grey							
0105 White*Sand							
0505 Grey							
0540 Grey*Dark Grey							
0405 Black*Grey							
0406 Black*Bronze							
0539 Black*Dark Grey							
0404 Black							

3	0	4	4	0
3	0	4	4	0
3	0	4	4	0
2	0	4	4	0
2	0	4	4	0
2	0	4	4	0
2	0	4	4	0
1	0	4	4	0
1	0	4	4	0

Ts (Solar transmittance): Proportion of solar energy transmitted through the fabric.

Rs (Solar reflectance): Proportion of solar radiation reflected by the fabric.

As (Solar absorptance): Proportion of solar radiation absorbed by the fabric.

Tv (Visible light transmittance): Total percentage of light radiation through the fabric over a wavelength of 380 to 780 nm.

Rv (visible light reflectance): Total percentage of light radiation reflected by the fabric over a wavelength of 380 to 780 nm.

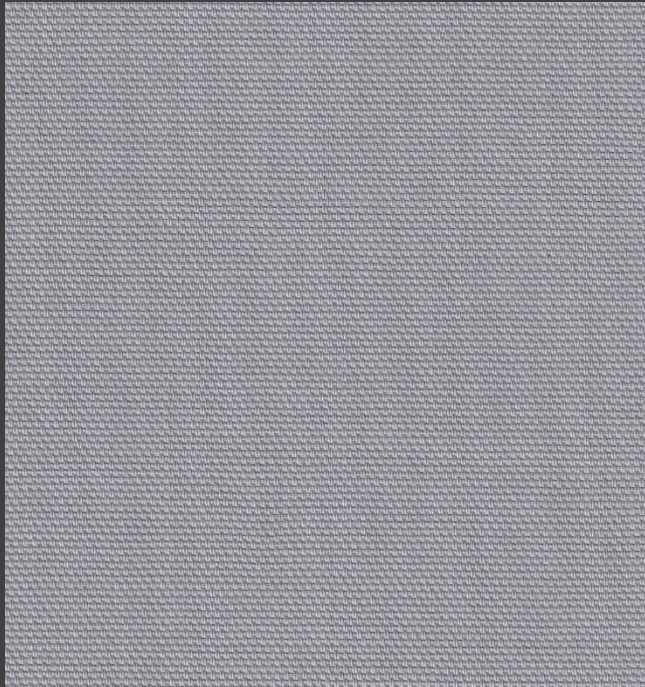
SHGC (Total solar factor): Solar energy which actually penetrates into a room through the blind and glazing. A low value means good thermal performance.

Comfort Classification According to EN14501 : 0. Very little effect    1. Little effect    2. Moderate effect    3. Good effect    4. Very good effect

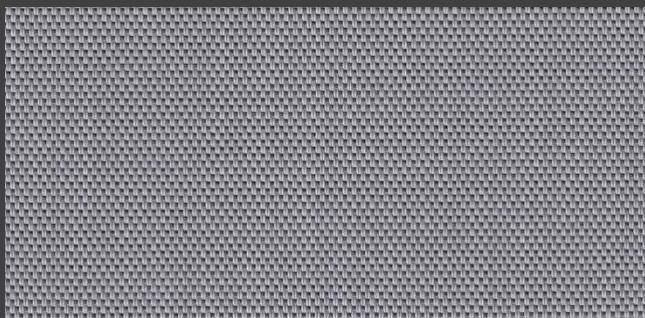




## Colours



SK0505 Grey



SK0540 Grey\*Dark Grey



SK0405 Black\*Grey



SK0539 Black\*Dark Grey



SK0101 White\* White



SK0105 White\*Grey



SK0107 White\*Sand



SK0406 Black\*Bronze



SK0404 Black

\* Colours may be slightly different from the actual ones



**Hande<sup>®</sup>**

**Hande Manufacturing(China)Co.,Ltd**

Add: No.161, Yao TianHe Street,Yong shun Avenue,Yonghe Economic Zone,  
GZ Economic&Technological Development District, Guang zhou, China

Tel: 86-20-3222888 Fax: 86-20-3222205 PostCode: 511356

Mail: info@handegroup.com.cn

[www.handegroup.com.cn](http://www.handegroup.com.cn)