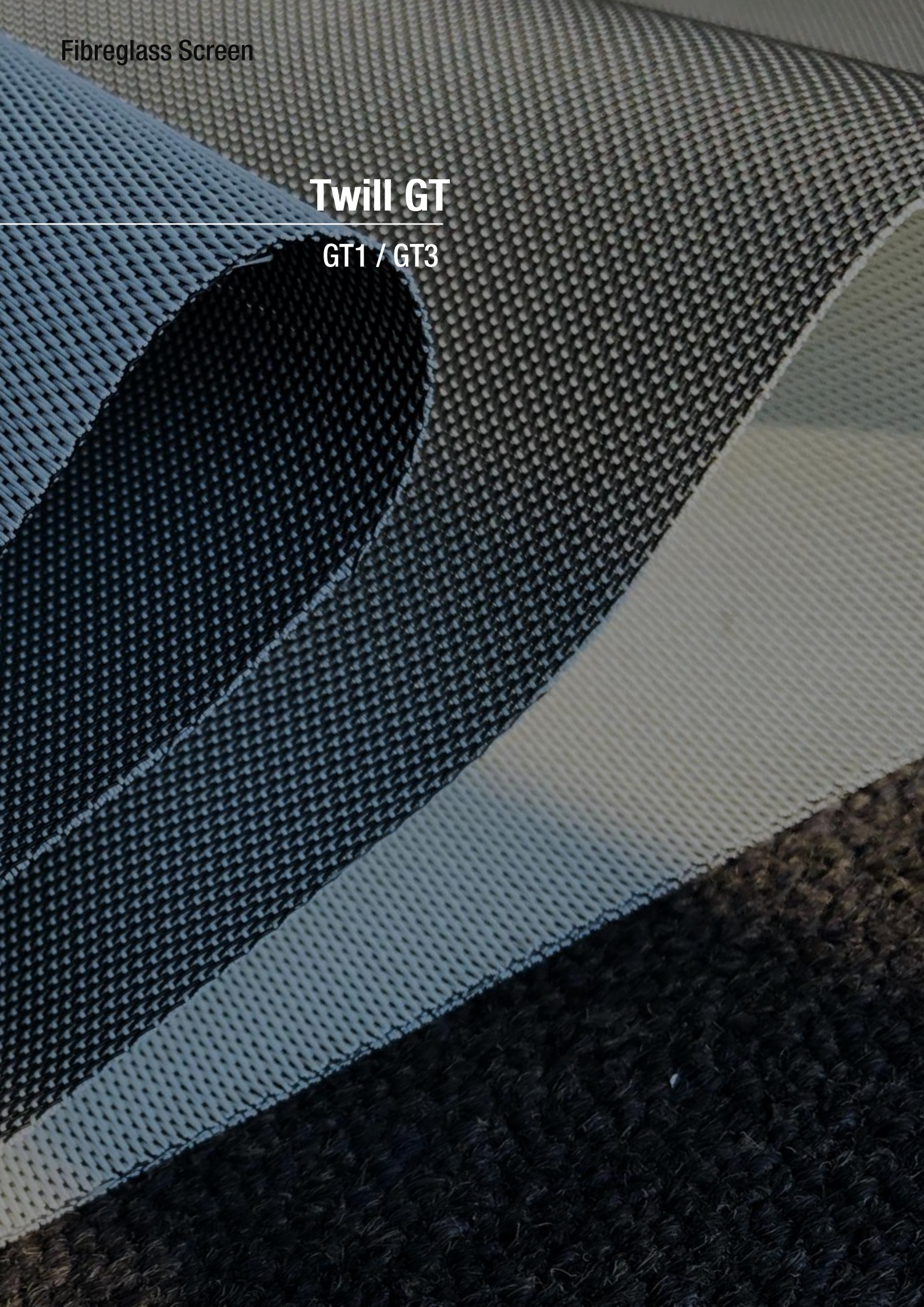


Fibreglass Screen

**Twill GT**

---

GT1 / GT3





## Product Certificate

<b>Fire, Smoke Classification</b>	FR (US) - NFPA 701 TM#1 B1(CN) - GB8624	BS (GB) - 5867 Part2 TypeB M1 ( F ) - NF P 92-507	B1(DE) - DIN4102
<b>Health &amp; Safety</b>	Oeko-tex Standard 100 class IV RoHS Directive (EU)2015/863 AATCC112-2014	Greenguard® Gold EN71 Part 3:1994 GB18586 - 2001	MIF Certificate
<b>Bacterial &amp; Fungal Resistance</b>	ASTM G21-15	0 Grade	None fungi growth
	ASTM E 2180-07	Reduce more than 99.9% of bacteria	
<b>Colour fastness to light</b>	Grade 8	ISO105 B02:2014	
	≥4.0	AATCC TM 16.3-2014; Option 3; Xenon Arc Lamp	
<b>Warranty</b>	5 Years		



## Technical Data

STYLE		GT1	GT3
<b>Composition</b>		31% Fibreglass 69% PVC	31% Fibreglass 69% PVC
<b>Openness Factor</b>		≈1%	≈3%
<b>UV Screen</b>		Up to 99%	Up to 97%
<b>Width</b>	inch	98"–118"	98"–118"
	cm	250–300	250–300
<b>Weight</b>	oz/yd <sup>2</sup>	16.95±5%	16.06 ± 5%
(ISO 2286–2)	g/m <sup>2</sup>	575 ± 5%	545 ± 5%
<b>Thickness</b>	inch	0.034 ± 5%	0.033 ± 5%
(ISO 2286–3)	mm	0.87 ± 5%	0.85 ± 5%
<b>Mechanical</b>	<b>Resistance</b>		
<b>Breaking</b>	Warp	≥1200 N/5cm	≥980 N/5cm
(ISO 13934–1)	Weft	≥ 750 N/5cm	≥770 N/5cm
<b>Tear</b>	Warp	≥165 N	≥60 N
(ISO 4674)	Weft	≥125 N	≥55 N
<b>Packing</b>		32.8 yards	32.8 yards
(Roll Length)		30 lm	30 lm

## Thermal and Optical Factors

Color	Side	Fabric Properties					Fabric & Glass	
		Thermal			Optical		SHGC % Improvement	SHGC
		Ts	Rs	As	Rv	Tv		

Recommended Comfort Classification				
Thermal Control	Visual			
	Daylight Utilization	Glare Control	Night Privacy	Outward Visibility

### Twill GT 1%

0101 White*White	A	17	66	17	73	14	55%	0.22
0102 White*Linen	A	15	63	22	68	11	52%	0.22
	B	15	57	28	60	11	46%	0.24
0104 White*Black	A	7	47	46	47	6	42%	0.27
	B	9	22	69	32	8	30%	0.29
0105 White*Grey	A	11	54	35	60	7	47%	0.23
	B	11	36	53	38	7	33%	0.29

2	2	1	2	0
2	2	1	2	1
2	1	3	2	2
2	1	2	2	1

### Twill GT 3%

0101 White*White	A	19	64	17	71	16	53%	0.23
0102 White*Linen	A	19	63	18	67	13	53%	0.23
	B	17	62	21	59	13	45%	0.25
0104 White*Black	A	8	43	49	34	7	39%	0.27
	B	9	20	71	8	8	27%	0.29
0105 White*Grey	A	15	48	37	57	7	45%	0.24
	B	11	52	37	36	7	31%	0.30

2	2	1	2	0
2	2	1	2	1
2	1	2	2	2
2	1	1	2	1

Ts (Solar transmittance): Proportion of solar energy transmitted through the fabric. Rs (Solar reflectance): Proportion of solar radiation reflected by the fabric. As (Solar absorptance): Proportion of solar radiation absorbed by the fabric. Tv (Visible light transmittance): Total percentage of light radiation through the fabric over a wavelength of 380 to 780 nm. Rv (visible light reflectance): Total percentage of light radiation reflected by the fabric over a wavelength of 380 to 780 nm. SHGC (Total solar factor): Solar energy which actually penetrates into a room through the blind and glazing. A low value means good thermal performance.

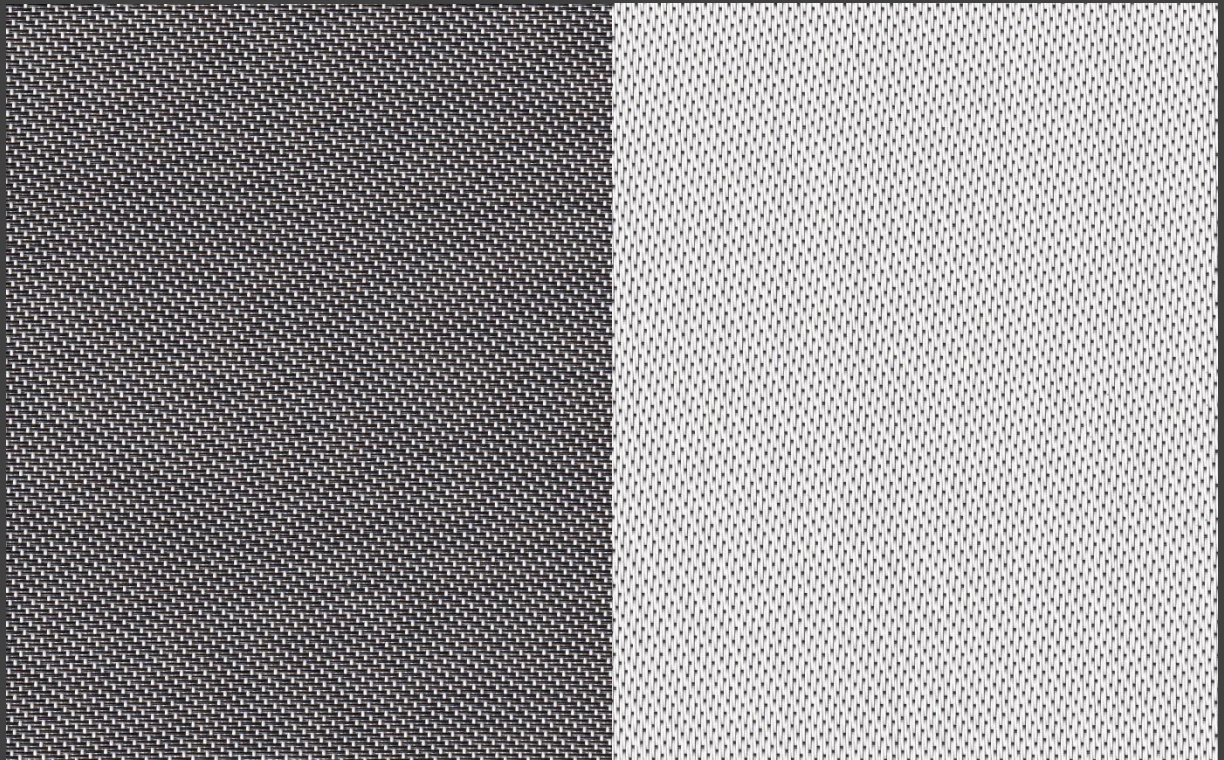
Comfort Classification According to EN14501 : 0. Very little effect 1. Little effect 2. Moderate effect 3. Good effect 4. Very good effect



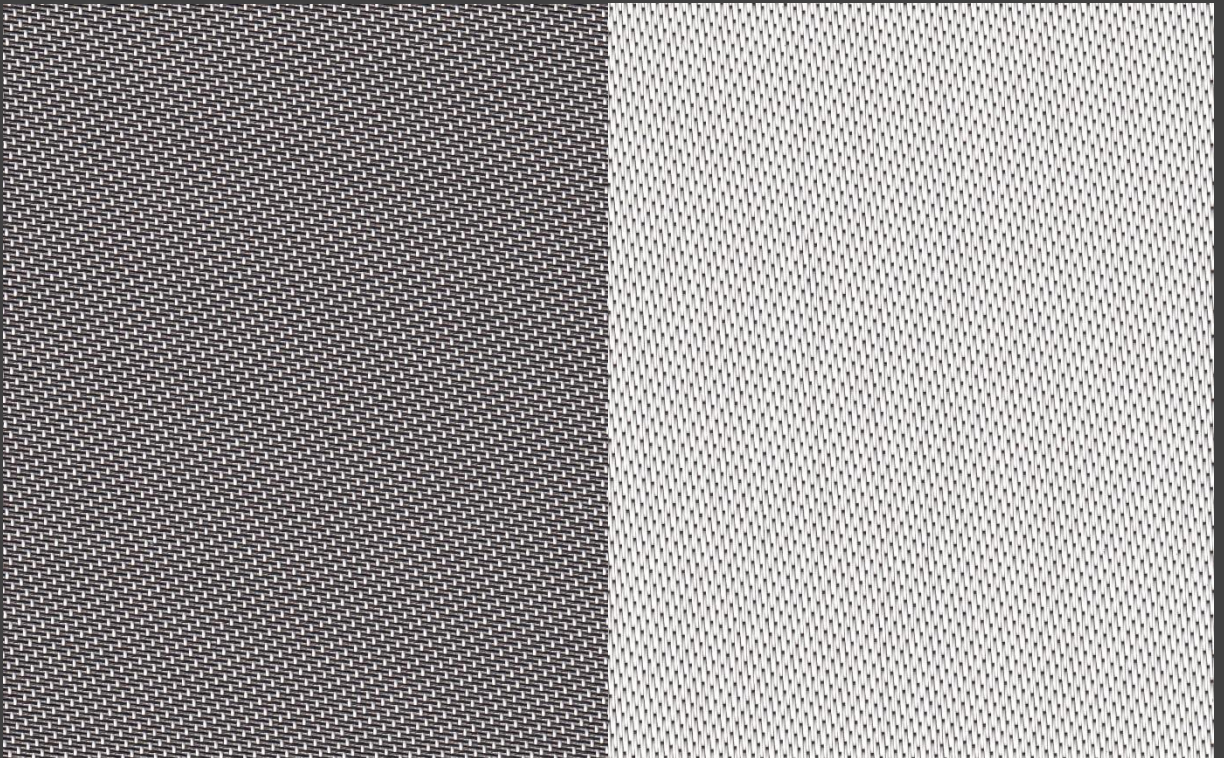
## Openness Factor

0104 White \* Black

GT 1%



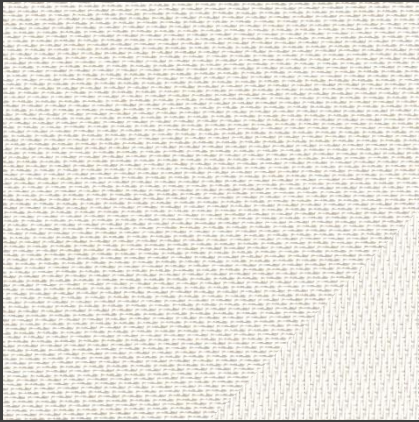
GT 3%





## Colours

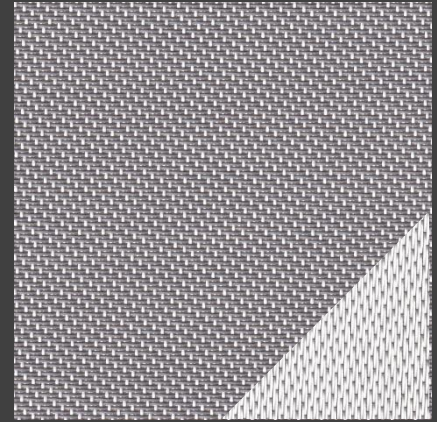
GT 1%



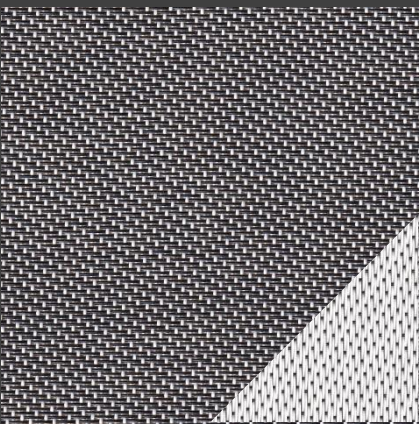
0101 White \* White



0102 White \* Linen



0105 White \* Grey



0104 White \* Black



**HanDe<sup>®</sup>**

**Hande Manufacturing(China)Co.,Ltd**

Add: No.161, Yao TianHe Street,Yong shun Avenue,Yonghe Economic Zone,  
GZ Economic&Technological Development District, Guang zhou, China

Tel: 86-20-3222888 Fax: 86-20-3222205 PostCode: 511356

Mail: info@handegroup.com.cn



[www.handegroup.com.cn](http://www.handegroup.com.cn)